



Mail this card and/or donation to:

Perry Institute for Marine Science
100 North US Highway 1 • Suite 202
Jupiter, Florida 33477-5122

Ph 561 • 741 • 0192
Fax 561 • 741 • 0193
e-mail: cmrc@cmrc.org
www.cmrc.org

THE PERRY INSTITUTE FOR MARINE SCIENCE INC. IS A PRIVATE 501(C)(3) NOT-FOR-PROFIT, TAX EXEMPT ORGANIZATION. A COPY OF THE OFFICIAL REGISTRATION AND FINANCIAL INFORMATION OF THE PERRY INSTITUTE FOR MARINE SCIENCE MAY BE OBTAINED FROM THE DIVISION OF THE CONSUMER SERVICES BY CALLING TOLL FREE 1-800-435-7352 WITHIN THE STATE OF THE FLORIDA. REGISTRATION DOES NOT IMPLY ENDORSEMENT, APPROVAL OR RECOMMENDATION BY THE STATE.

Name: _____
Address: _____
E-mail: _____
Phone: _____
Fax: _____

To join the Perry Institute for Marine Science team of supporters and do your part to Healing Our Oceans, please call us to discuss your interest or mail your contribution card today.

Help us advance these areas:

EDUCATION

Student Internship - We encourage students to further their knowledge and understanding through research in the field.

Student Field Courses - We will be broadening our outreach to local communities by visiting schools and offering in-class presentations, and by forming new partnerships with other organizations involved.

Outreach and Stewardship - Our goal is to increase local community involvement in support of marine conservation and to provide new opportunities for the public to learn about their environment.

FACILITIES

Research Facilities- Plans are under way to expand our research and education services at Lee Stocking Island. New laboratory facilities are currently under construction.

Utilities Service- We utilize energy conserving technologies and pursue energy research that minimizes impact and is supportive of the local ecosystem.

Buildings & Infrastructure- Successful research at Lee Stocking Island relies on efficient services for our visitors. Plans are being developed for new laboratories, visitor housing, equipment and infrastructure to support our expanding services.

MARINE OPERATIONS

Diving Support - Giving scientists access to the ecosystem being studied is the primary focus of our diving program. Plans to expand and refurbish facilities and equipment will increase our levels of services and diving capacity, and lead to more advanced technical diving.

Boat Operation- Replacing aging equipment and increasing our number of research vessels is necessary to further our research.

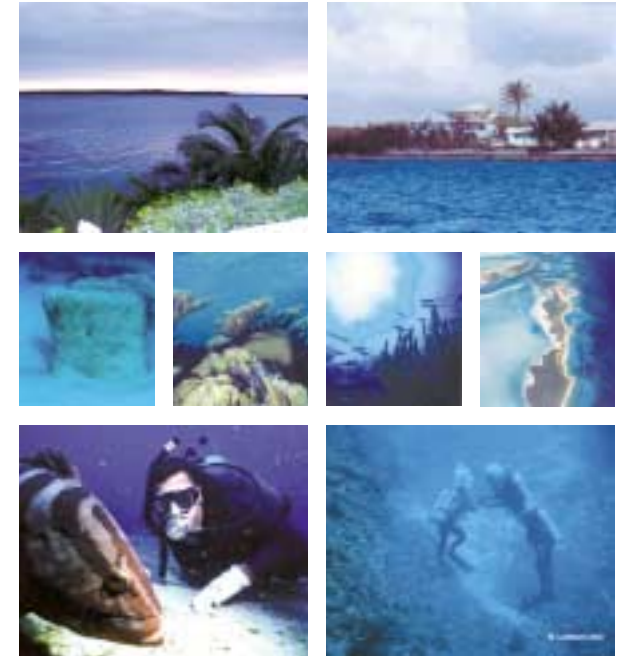
Waterfront Facilities- We plan to install and maintain moorings, rebuild docks, replace boat equipment, build better storage, and provide enclosed space for maintenance and repairs.

RESEARCH

Coral Reef Health- As coral reefs show signs of degradation throughout the Caribbean, we are working to better understand their importance as a habitat and expand conservation efforts.

Ensuring Tomorrow's Marine Life- Our research is aimed at the design of marine reserves and assessing economically important species.

Undersea Exploration & Technology- Through exploration and biotechnology, we are working to discover new untapped resources that benefit society and healthy ecosystems.



OUR MISSION

To improve and enhance the understanding of the wider Caribbean region's marine environment by supporting and conducting high quality marine research and education programs in order to **provide solutions to people and our oceans.**

OUR GOALS

- Improve understanding of the importance of scientific issues related to marine ecosystems and resources of the wider Caribbean region.
- Promote the proliferation of knowledge about marine ecosystems and resources of the wider Caribbean region.

HOW YOU CAN HELP

Major support for the Perry Institute for Marine Science must come from concerned individuals and corporations recognizing the global importance of work being done to improve the sustainability of our marine ecosystems.

You can play a vital role in the protection of our fragile marine ecosystems by supporting the Perry Institute for Marine Science and helping to ensure that it's unique research and education programs continue to provide solutions to people and our oceans.

You can make a difference to heal our oceans through many different kinds of contributions....

MONETARY SUPPORT

The vast majority of funds received are designated for scientific research and operational costs. As a result, the Perry Institute for Marine Science directs most of its funding towards finding solutions to key environmental problems and keeps administrative costs to a minimum.

With the ever changing economy, general development funds for maintenance of buildings, equipment, and infrastructure are difficult to obtain. Through your support we will be better able to maintain our facilities and infrastructure and fulfill our mission of providing solutions to people and our oceans.

SUPPLIES, EQUIPMENT AND SERVICES

Buildings, equipment and infrastructure at our field station on Lee Stocking Island, are under constant attack from the corrosive saltwater environment, and must be continually monitored, maintained and replaced. Transportation costs for getting equipment, supplies and materials to the island's remote location have doubled. Contributions of items (new or used) such as building supplies and materials, vehicles, boats, tools, household items and laboratory equipment would be greatly appreciated. Services such as private flights, architectural drawings and electrical plans are invaluable.

RESEARCH GRANTS

Is there a particular field of research that you would especially like to support? The Perry Institute for Marine Science is known for funding innovative projects that are proposed by world-renowned scientists. Unfortunately, there are simply not enough funds awarded by our partners to support all the highly reviewed and recommended proposals that are submitted to us. Your research grants and unrestricted contributions will help us maximize the productivity of our field station at Lee Stocking Island and keep it actively supporting research and educational projects on a year-round basis.

PLEDGE CARD

Enclosed please find my contribution of:
\$ _____

Your contribution may be tax deductible to the full extent allowed by the law. Gifts of any and all amounts are sincerely appreciated and are acknowledged in our biannual reports. *Please make your check payable to:*
The Perry Institute for Marine Science.

GIFT LEVELS

All contributions in excess of \$50 will be recognized with a small gift of appreciation. You will be added to our mailing list for invitations to special events and publications. For donations in excess of \$ 5,000, please contact our office at (561) 741-0192 to discuss the benefits of your contribution.

- I am interested in donating services or products. Please call me.
- I am interested in becoming a volunteer.

For a copy of our most recent biannual report please call: **561-741-0192**

I WOULD LIKE TO SUPPORT THE FOLLOWING:

- Unrestricted Gift

Education

- Student Internship
- Outreach and Stewardship
- Student Field Courses
- Unrestricted Gift for Education

Facilities

- Building and Infrastructure
- Utilities Service
- Research Facilities
- Unrestricted Gift for Facilities

Marine Operations

- Waterfront Facilities
- Boat Operations
- Diving Support
- Unrestricted Gift for Marine Operations

Research

- Undersea Exploration and Technology
- Ensuring Tomorrow's Marine Life
- Coral Reef Health
- Unrestricted Gift for Research