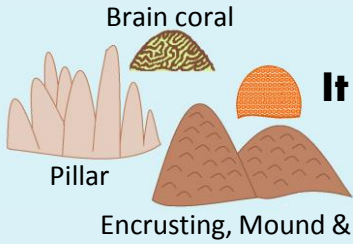


HOW TO IDENTIFY

STONY CORAL TISSUE LOSS DISEASE

An aggressive disease is spreading fast in the Caribbean and is threatening our corals



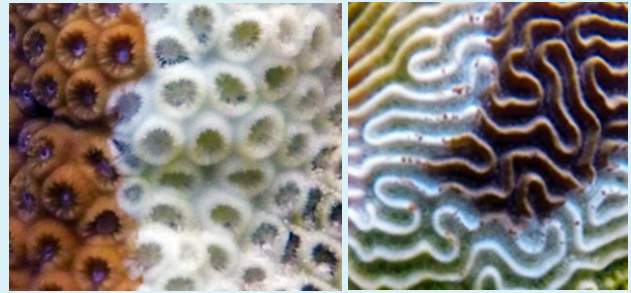
It attacks stony corals NOT soft corals or branching species



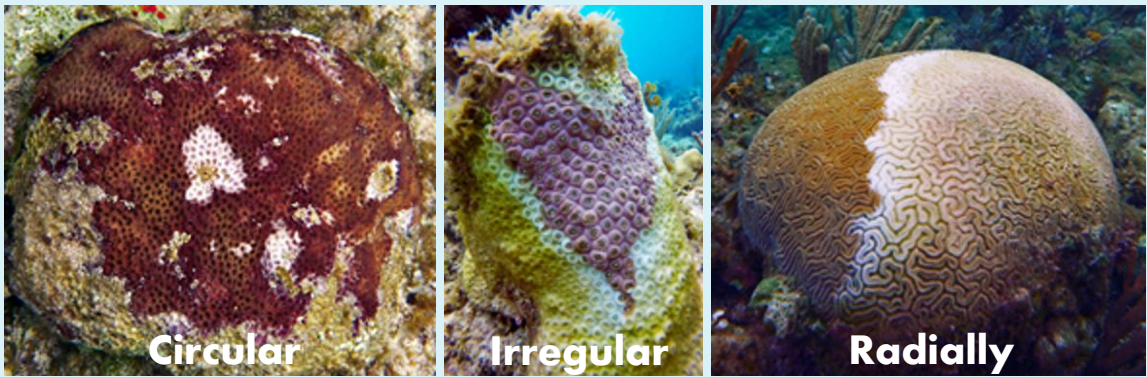
Tissue detachment and loss



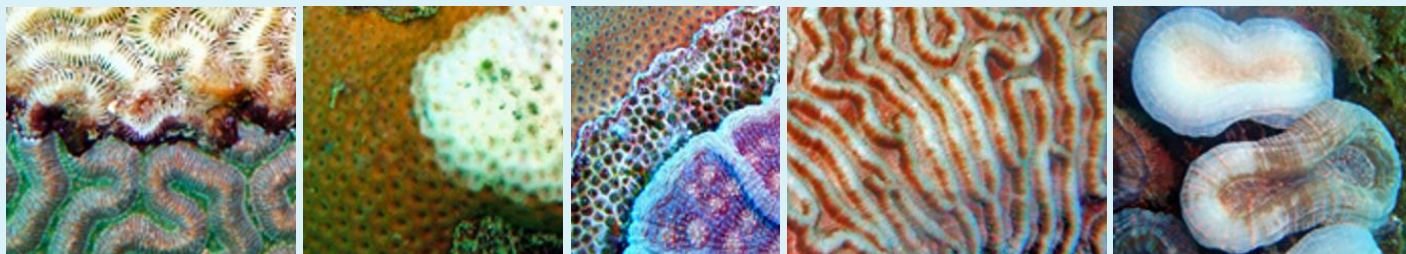
Bare white coral skeleton left



Lesions spreading



Do NOT confuse with other diseases/afflictions



Black Band disease

White Plague disease

Competition

Bleaching

Bleaching

YOU CAN HELP US MONITOR SCTL D

Let us support you: coral@perryinstitute.org

